

Indecent

July 01 - 14, 2022



Indecent

July 1-14, 2022

Chautauqua Theater Company

Bratton Theater

by **Paula Vogel**

Composed by **Lisa Gutkin & Aaron Halva**

Directed by **Lisa Rothe**

Choreography by **Adin Walker**

Inspired by true events surrounding the controversial 1923 Broadway production of Sholem Asch's *God of Vengeance* and set at a time when waves of immigrants were changing the face of America, this play with music from Pulitzer Prize-winning playwright Paula Vogel is full of joyful human passion and is a brilliant, moving experience about theater, censorship, and love.

Cast, Creative & Production

Cast

The Stage Manager (Lemml):

Charles Denton

The Ingenue (Chana):

Rebeca Robles

The Ingenue (Avram):

Isaiah Stavchansky

The Middle (Halina):

Ellen Nikbakht

The Middle (Mendel):

Ben Schrager

The Elder (Vera):

Lori Wilner*

The Elder (Otto):

Robert Pescovitz*

Meyer Balsam, Isaac, Clarinet:

Jason Gresl

Nelly Friedman, Dr. Hornig, Violin:

Abigail Allwein*

Moriz Godowsky, Lazar, Accordion:

Jeremy Spindler

Creative Team

Music Director:

Lisa Gutkin

Scenic Designer:

Lee Savage

Costume Designer:

Nicole Wee

Lighting Designer:

Barbara Samuels

Sound Designer:

Megumi Katayama

Projection Designer:

Yee Eun Nam

Language & Dialects Coach:

Eleanor Reissa

Assistant Director:

Scout Davis

Stage Manager:

Jean E. Compton*

Assistant Stage Manager:

Maria Mills

Production Team

Props Manager:

Hyla Sue Stellhorn

Assistant Props Manager:

Mer Platt

Costume Supervisor:

Cece Hill

Wardrobe Supervisor:

Marcy LB Fitzpatrick

Asst. Costume Shop Supervisor/Draper:

Krissy Sneshkoff

Costume/Wardrobe Assistant:

Sophie Millar

Sound Supervisor:

Alex Brock, John Kolbinski

Audio Engineer/Board Operator:

Kevin Champion

Sound Asst./Board Operator:

Lilly Oyen

Lighting Supervisor:

Jack Sears

Associate Lighting Supervisor:

Noemi Barerra

Lighting Tech/Programmer/Board Op:

Sadie Judd

Run Crew:

Amelia Kovach

Scenic Fellow:

Donnie Woodard

Lighting Fellow:

Adrienne Johnson

Sound Fellow:

Theresa Ramos

*The noted Actors & Stage Manager are members of the Actors' Equity Association, the union of professional actors and stage managers in the United States.

**The designers are represented by United Scenic Artists, Local USA-829 of the IATSE.

Actors' Equity Association, founded in 1913, is more than 49,000 actors and stage managers in the United States. Equity seeks to advance, promote, and foster the art of live theatre as an essential component of our society.

Equity negotiates wages and working conditions, providing a wide range of benefits, including health and pension plans. AEA is a member of the AFL-CIO, and is affiliated with FIA, an international organization of performing arts unions. The Equity emblem is our mark of excellence. www.actorsequity.org.

Leadership & Staff

Artistic Director:

Andrew Borba

General Manager:

Emily Glinick

Director of New Work:

Olga Sanchez Saltveit

Assistant Artistic Director:

Rachel Sharp

Company Manager:

Sam Wong

Assistant Company Manager/Covid Safety Specialist:

Matthew B. Cullen

Production & Facilities Manager:

Holly Ahlborn

Arts Marketing Specialist:

Makayla Santiago-Froebel

House Manager:

Sarah Brown-Millspaw

Arts Marketing Associate:

Danny Sanchez

Assistant House Manager & Community Engagement Associate:

Daniel Wilde

Characters

The Dead Troupe. The Troupe plays everyone.

The Troupe

THE STAGE MANAGER, LEMML

The Ingenue (Chana): RIFKELE, MADJE ASCH, ELSA HEIMES,
IMMIGRANT, REINA/RUTH, VIRGINIA MCFADDEN, BAGELMAN SISTER

The Middle (Halina): MANKE, IMMIGRANT, FREIDA NIEMANN,
DEINE/DOROTHEE, DR. HORNIG, BAGELMAN SISTER

The Elder (Vera): SARAH MRS. PERETZ, IMMIGRANT, ESTHER
STOCKTON, MADJE ASCH

The Ingenue (Avram): SHOLEM ASCH, IMMIGRANT, MORRIS
CARNOVSKY, EUGENE O'NEILL, JOHN ROSEN

The Middle (Mendel): NAKHMEN, IMMIGRANT. HARRY WEINBERGER,
OFFICER BENJAMIN BAILIE, RABBI JOSEPH SILVERMAN

The Elder (Otto): YEKEL, MR. PERETZ, RUDOLPH SCHILDKRAUT,
IMMIGRANT, BARTENDER

Cast Bios



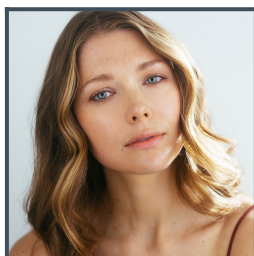
Charles Denton

The Stage Manager (Lemml)

Lake Forest, CA
CTC: First Season

Regional/Educational: Balm In Gilead, Alice's Wonderland, Dreamers: Aquí y Allá, End Days, The Funfair, Stitching Stardust, Moscow Moscow Moscow Moscow Moscow.

Steppenwolf 2017, CSULB BA: Theatre 2018, Columbia University MFA Acting 2024

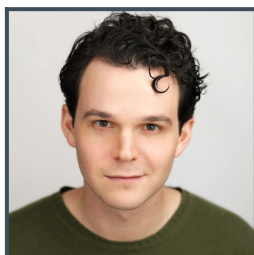


Rebeca Robles

The Ingenue (Chana)

New Haven, CT
CTC: 1st Season

Regional: The Wolves (Horizon Theater), The Hero's Wife (Synchronicity Theater), A Funny Thing Happened on the Way to the Gynecologic Oncology Center... (Atlanta Theater Club), Blackbird (Atlanta Theater Club); Graduate School: Affinity, Bodas de Sangre (Yale School of Drama); Film: Shelter Me (Dir. Jake Weber), Old Flame (Dir. Christopher Denham); Alina (Dir. Rami Kodeih), A Father's Legacy (Dir. Jason Mac), Hope Bridge (Dir. Joshua Overbay); Television: Reprisal (Hulu), Better Things (FX), Ambitions (OWN), Insatiable (Netflix)

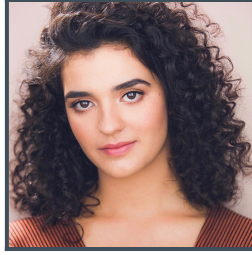


Isaiah Stavchansky

The Ingenue (Avram)

CTC: First season

Regional: Six Characters in Search of an Author (Wellfleet Harbor Actors Theatre). Atlantic Acting School.



Ellen Nikbakht

The Middle (Halina)

Memphis, TN
CTC: First Season

Regional: Fun Home (KC Rep); Peter and the Starcatcher, Urinetown, Mr. Burns, A Christmas Carol (Clarence Brown Theatre). Educational: 50 Boxes of Earth, Everybody (UCSD).



Ben Schrager

The Middle (Mendel)

Elkins Park, PA
CTC: First Season

CTC Debut. Off-Broadway: 1001 Nights (Atlantic Theater); Regional: The Royal Family of Broadway, Man of La Mancha, His Girl Friday (Barrington Stage); Indecent (Arden Theatre); Tidwell, or The Plantation Play (Sam French OOB Festival); The Sandalwood Box, The Nomad (The Flea); Dancing Lessons (Lake Dillon Theater); Peter and the Starcatcher (Cape Fear Regional Theatre); Henry Award Nomination: Outstanding Actor in a Play, for Dancing Lessons. BFA: Acting, New York University - Tisch.



Lori Wilner

The Elder (Vera)

NYC and Hudson Valley
CTC- First Season

BROADWAY: Beautiful, The Assembled Parties, On a Clear Day You Can See Forever, A Catered Affair, The Diary of Anne Frank, Fiddler on the Roof (2005 and 2015 productions), Awake and Sing!, Domesticated, The People in the Picture, Everett Beekin and Those Were the Days. **OFF-BROADWAY:** Prayer for the French Republic (MTC), Hannah Senesh (Cherry Lane), Dancing on Nails (Theatre80), Milk and Honey (AJT), Yiddish Trojan Women (AJT), Hannah 1939 (Vineyard Theater), The Witch (JRT). **Regional:** Rags (Goodspeed Opera House), Relativity (with Richard Dreyfuss) (Theatreworks), Other Desert Cities (Theater Aspen), Fiddler on the Roof (Goodspeed), Giant (world premiere - Signature Theater), Cabaret (Arizona Theater Co), Beau Jest (Gulfshore Playhouse), Brighton Beach Memoirs (GEVA), Broadway Bound (GEVA), Broken Glass (Philadelphia Theater Co.), The Sisters Rosensweig (Alliance), The Glass Menagerie (N.M. Rep), The Heidi Chronicles (Forum), Lost in Yonkers (Arkansas Rep), Conversations with my Father (GEVA),

Sweepers (Capital Rep), The Immigrant (Penguin Rep), Butterfingers Angel (Syracuse Stage), When Something Wonderful Happens (Humana Festival), The Foreigner (Shadowland Stages), Bill W and Dr. Bob (Shadowland Stages), Handle with Care, Farragut North (Shadowland Stages) TV/Film: New Amsterdam, Guiding Light, Gebirtig, Second Guessing Grandma, Wagners' Jews Awards: Drama Desk nom, Goldy, DramaLogue, LA Weekly, Henry, Charles Bowden, CT Critics Circle



Robert Pescovitz

The Elder (Otto)

Bellingham, Washington
CTC: First Season

Regional: Old Globe Theatre, Artists Repertory Theatre, Cincinnati Playhouse, American Players Theatre, Mark Taper Forum, Shakespeare Orange County, Shakespeare Festival/ L.A., J.Howard Wood Theater. Los Angeles Theater: Furious Theater Company, The Court Theater, Miles Memorial Playhouse, Founding member of A Noise Within Theater Company. Film: Bad Samaritan; Blood in Blood Out, Breathing Hard. Radio: L.A. Theatre Works. Television: (Selected List) Law and Order (Original Re-boot), Grimm, The Librarians, Mike and Molly, Without A Trace, Close To Home, Brothers and Sisters.
Awards: Los Angeles Drama Critics Award for Lead Performance
Education: Northwestern University (BSS), American Conservatory Theater (MFA)

Musician Bios



Abigail Allwein

Nelly Friedman, Dr. Hornig, Violin

CTC: First Season

Much Ado About Nothing (Old Globe), Vocal Soloist (San Diego Opera/San Diego Symphony), Winters' Tale (Old Globe), Sister Act (Walnut Street Theatre), Once (Lamb's Players), Persuasion (Lamb's Players), Indecent (Cape Rep), I Hate Hamlet (Montgomery Theatre), Sound of Music (Steel River Playhouse), I Love You You're Perfect Now Change (Actors' Summit), Big River (True North Cultural Arts), Big River (Stephen Foster Productions), Music Man (Fine Arts Assoc. Cleveland), Company (FPAC Professional Wing), David (Barter Theatre), Godspell (The Eagle), Jane Eyre: The Musical (The Ritz Theatre), Così Fan Tutte (San Diego Opera), El Último Sueño y Frida y Diego: Workshop (San Diego Opera) Romeo and Juliette (San Diego Opera)



Jason Gresl

Meyer Balsam, Isaac, Clarinet

CTC: First Season

Broadway National Tours: Phantom of the Opera, Wicked, Chicago, Book of Mormon, Elf. Regional: Sound of Music (Northern Stage), Indecent (Arden Theatre), Urinetown (Ghostlight Theater), Little Women (Ghostlight Theater), Indecent (Weston Playhouse), Indecent (Milwaukee Chamber Theater), In The Heights (South Bend Civic), Evita (Interlakes Theater), Cabaret (Winnepausakee Playhouse), The Rink (Green Mountain Guild), Rags (Green Mountain Guild), On The 20th Century (Green Mountain Guild), Caroline or Change (Lake Michigan College), Drowsy Chaperone (Bethel College), Sweeney Todd (Dartmouth College). BM Oberlin College, MM University of Colorado Boulder.



Jeremy Spindler

Moriz Godowsky, Lazar, Accordion

CTC: First Season

Jeremy Spindler is a self-taught accordionist who grew up in France and Brazil. He plays in several Buffalo musical groups including Birds on the Wire, Machine Dream, and Comienzos in which he interprets original compositions and Balkan, Klezmer, French and Brazilian Forro styles of music. He has a BA from SUNY Buffalo.

Creative Team Bios



Paula Vogel

Playwright

Pulitzer Prize-winning playwright whose plays include INDECENT (Tony Award for Best Play), HOW I LEARNED TO DRIVE (Broadway production set for spring 2020; Pulitzer Prize for Drama, the Lortel Prize, OBIE Award, Drama Desk Award, Outer Critics Circle and New York Drama Critics Awards for Best Play), THE LONG CHRISTMAS RIDE HOME, THE MINEOLA TWINS, THE BALTIMORE WALTZ, HOT'N'THROBBING, DESDEMONA, AND BABY MAKES SEVEN, THE OLDEST PROFESSION and A CIVIL WAR CHRISTMAS.



Lisa Gutkin

Music Director & Composer

Lisa Gutkin is a Grammy Award-winning violinist, singer, actor, and composer. She is best known as a member of the acclaimed Klezmatics, and most recently for her musical score, performance, and music direction in the two-time Tony award-winner, Indecent. Lisa has had a storied career that reflects the eclectic nature of her life, passion, and creativity. A cameo performance in Sex and the City, a seat in Sting's Broadway band for The Last Ship, a CD of original songs produced by John Lissauer, and scores for two of Pearl Gluck's films have taken her a long way from her beginnings as back up musician to the Fast Folk songwriters' collective.



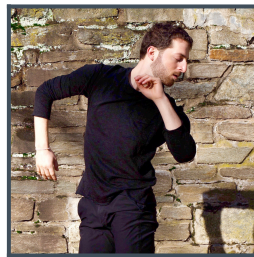
Lisa Rothe

Director

Pine Bush, New York CTC: Tenth Season

CTC: Director: Ah, Wilderness, Hold These Truths, Cat on a Hot Tin Roof, Dairyland, Lysistrata; Actor: Iphigenia & Other Daughters, Learned Ladies, Under Milkwood. Off-Broadway: Wild Abandon (Irish Rep), Hold These Truths (Epic Theatre Ensemble & Sheen Center), Science Fair (HERE), Just Like I Pictured It (Foundry); Ada (Center for Contemporary Opera); Nowhere in America (Keen Company), Like Love (NYMF), Couldn't Say (MITF), 365 Days/365 Plays (The Women's Project), Split Wide Open (Summer Play Festival), Anatomy 1968 (Summer Play Festival), Mermaid (59 e 59th), Lysistrata (BAM), Jazz Desert (Culture Project); Regional: Another Revolution (Gulfshore Playhouse), Fun Home (Kansas City Repertory Theatre), Steel Magnolias)Guthrie Theater), Cat on a Hot Tin Roof (Kansas City

Repertory Theatre), Hold These Truths (Barrington Stage Theatre), Amber Waves (Indiana Repertory Theater), In My Chair (Virginia Repertory Theatre), Hold These Truths (TheatreWorks/Silicon Valley), Sooner/Later (Cincinnati Playhouse), Hold These Truths (The Guthrie Theatre), Detroit '67 (PlayMakers Repertory Company), Confederates (TheatreWorks/Silicon Valley), The Harassment of Iris Malloy (People's Light), Ropes (Two River Theatre), Hold These Truth (ACT/Seattle), The Peculiar Patriot (Penumbra Theatre) Dear Elizabeth (People's Light), Hold These Truths (Playmakers Repertory Company), Hold These Truths (Honolulu Theatre for Youth), Penelope by Ellen McLaughlin (Playmakers Repertory Company), My Ohio (Vermont Stage Company), Interpreting William (Indiana Repertory Theatre), Looking For the Pony (Synchronicity Theatre), Penelope (The Getty Center), Twelfth Night (Seaside Shakespeare), As You Like It (Milwaukee Shakespeare Company), Stop Kiss (Riverside Theatre). Awards: Theater Bay Area Award (Hold These Truths), Stage Directors & Choreographer's Joe A Callaway Award Nomination (Hold These Truths), Drama League Award Nomination (Belly of the Beast). MFA: NYU Graduate Acting Program; BFA: University of Evansville.



Adin Walker

Choreographer

CTC: 2017 Directing Fellow. Adin is movement director and associate director for the internationally-touring dance, puppetry, and climate-justice focused Phantom Limb Company, whose production Falling

Out about the 2011 tsunami and radiation disaster in Fukushima premiered in BAM's Next Wave Festival in 2018. Adin choreographed Indecent in Portland, OR with Artists Repertory Theater + Profile Theater (dir. Josh Hecht), and was Yehuda Hyman's associate choreographer for the play's first regional production at the Guthrie Theater (dir. Wendy Goldberg) following its Broadway run. Other collaborations with Hyman include his autobiographical dance-theater piece The Mar Vista which premiered at the 14th Street Y followed by a remount with Signature Theater in New York. As choreographer and director, Adin collaborates frequently with writers and composers Philip Dawkins, L M Feldman, Amy Freed, Ava Geyer, Julian Hornik, Khiyon Hursey, Emily Kitchens, Yilong Liu, Roger Q. Mason, Anya Pearson, Ezperanza Rosales-Balcarcel, Louisa Thompson, and Mark Sonnenblick. Adin danced principal roles in works by Karole Armitage, Maleek K. Washington, Alex Neoral, Christopher K. Morgan, Desmond Richardson, and Dwight Rhoden. Adin has been a guest artist/lecturer at Yale School of Drama, Princeton, and NYU Tisch, and is currently in residence at Stanford University where Adin is a PhD Candidate in Performance Studies + Feminist, Gender, and Sexuality Studies and teaches puppetry, dance, circus, and histories of queer art and activism. BA: Princeton. Proud SDC member.

[Website](#)



Lee Savage

Scenic Designer

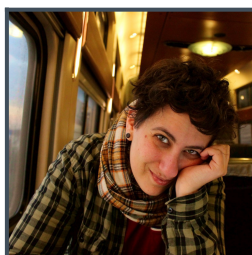
CTC: One Man Two Guvnors, An Octoroon, The Profane, Henry V, Our Town, The Tempest, A Raisin in the Sun, The Romeo and Juliet Project, Cat on a Hot Tin Roof, As You Like It, Fifty Ways, Love's Labour's Lost, Amadeus, You Can't Take It With You, The Glass Menagerie, Arcadia, A Midsummer Night's Dream, Death of a Salesman and The Just. Broadway: The Lightning Thief. Off-Broadway and NYC: Women's Project, Second Stage Uptown, Keen Company, Acting Company, Mabou Mines, Labyrinth, Primary Stages, LCT3, Roundabout Underground, Page 73, Atlantic, NAATCO, Clubbed Thumb, EST and NY Fringe. Regional: ACT, Asolo Rep, Baltimore Centerstage, Chautauqua, Cleveland Play House, Dallas Theater Center, Glimmerglass, Goodman, Guthrie, Huntington, KC Rep, Long Wharf, Old Globe, Shakespeare Theatre Company, Signature, Philadelphia Theatre Company, PlayMakers, Trinity Rep, Two River Theater, Washington National Opera, Wilma, Yale Rep and others. Awards: Helen Hayes, NAACP and Connecticut Critics Circle. Affiliations: Wingspace and USA829. Education: MFA (Yale School of Drama), BFA (RISD), Head of Scenic Design at Rutgers, Mason Gross.



Nicole Wee

Costume Designer

Nicole Wee (she/her) - CTC Design Fellow 2007 Season. National Tour: Martin Luther on Trial and The Great Divorce (Fellowship for the Performing Arts). Off-Broadway: Desperate Measures (New World Stages), Sideways (The Peccadillo Project), Closer Than Ever, and Storyville (Henry Hewes and Audelco nominations - Outstanding Costume Design, York Theatre Co.), The Body Politic (59E59), Surely Goodness and Mercy (Keen Co.), The Sensational Josephine Baker (Emerging Artists Theatre). Regional: Andy Warhol in Iran (Barrington Stage Co), The Great Leap (Portland Center Stage), Vietgone (Geva Theater Center), The White Snake (Baltimore Center Stage), Back Home Again (Leshner Center for the Performing Arts), Crazy For You, Spamalot (Muhlenberg SMT), I Do! I Do! (Peterborough Players), Tosca (Boheme Opera N.J.), Ruined (regional premiere, Best Costume Design — Best of the Suncoast 2010, Florida Studio Theatre). Interim Director: Playwrights Horizons Theater School. MFA: New York University.



Barbara Samuels

Lighting Designer

New York: Soho Rep, Ars Nova, Lincoln Center Theater (LCT3), New York Theatre Workshop, Playwrights Horizons, WP Theater, The Bushwick Starr, New Georges, and Clubbed Thumb. Regional: Woolly

Mammoth, Bard Summerscape, Long Wharf , The Alley, A.C.T., Shakespeare Theater Company, Playmakers Rep, Trinity Rep, Pig Iron Theatre, and Kansas City Rep. BA Fordham University, MFA NYU. Proud member of USA Local 829. New Georges Affiliated Artist. www.barbarasamuels.com.

Jean E. Compton

Stage Manager

CTC: Fourth Season.

CTC: Commedia, Blood at the Root, A Midsummer Night's Dream, Into the Breeches!, An Octoroon. Regional: Into the Breeches! (Cleveland Play House), The Whale & Venus in Fur (Rep Stage), Seasons at Two River Theater, Cleveland Play House. Chicago: Passage (Remy Bumppo Theatre Company), Paradise Square (Pre-Broadway), The Miscellany, All-One: The Dr. Bronner's Play, Spirits to Enforce (The Passage Theatre), 3:35PM, Candide, Mudpie 2018 (Mudlark Theater Company), Thirst (Strawdog Theatre Company), The Death of Gaia Divine (Momentary Theatre), You for Me for You (Sideshow Theatre Company), Lizzie (Firebrand Theatre), Shining Lives (Northlight). Company Member of The Passage Theatre. Graduate of The Theatre School at DePaul University. www.jeanecompton.com

Maria Mills

Assistant Stage Manager

CTC: Indecent, NPW2. Regional: Show Way the Musical (KCYA); Giselle (Warner Theater); Swan Lake (The Kennedy Center); The Nutcracker (Warner Theater). BA American University.



Scout Davis

Assistant Director

International: FEVER DREAM: A RETURN PERFORMANCE RITUAL (SIBIU International Theatre Festival) Off-Broadway: Many Loves (Atlantic Stage II). Regional: Extra-Ultra (City Theatre-Hamburg Studio). Off-Off-Broadway:

Next Faggot Nation (HERE Arts Center), Ivan's Widow (Duo Multicultural Arts Center), Ay Dias Chiqui (St. Ann's Church), Slaychella (LaGuardia Performing Arts Center), The Rise and Fall of Countess LuAnn DeLesseps (The Clemente Center). Artistic Associate with Playhouse Creatures Theatre Company. Directing Fellow at Westport Country Playhouse. Artist in Residence with Fresh Ground Pepper. Graduate of The John Wells MFA Directing Fellowship Program at Carnegie Mellon University.

Friends of the Theater

Founded in 1994, Friends of Chautauqua Theater is dedicated to ensuring that theater remains a powerful pillar of

the arts community at Chautauqua by working to enhance appreciation and engagement with the theater and the institution. Your membership supports new theater initiatives and helps us to enhance the experience of our company members through various events connections. Benefits include invitations to members-only live and virtual programming to enhance your theater experience prior to performances, and our annual “Meet the Company” event.

[Visit our website to learn more!](#)