

Edward Albee's *Who's Afraid of Virginia Woolf?*

August 14 - August 21, 2022



About the Show

Run Time: 3 Hours

Act 1: 60 minutes

10-minute intermission

Act 2: 60 minutes

10-minute intermission

Act 3: 45 minutes

In this American dramatic masterpiece, George, a professor at a small college, and his wife Martha have returned home from a Saturday night party when Martha announces that she has invited a young couple, new professor Nick and his wife Honey, to stop by for a nightcap. The drinks flow, and the inhibitions melt as this blazing story of desires, dreams, barbs, and brutality unfolds.

Cast, Creative and Production

Cast

Martha: Carol Halstead*

George: Andrew Borba*

Honey: Madeline Seidman*

Nick: Adam Shaukat*

Creative Team

Directed by: Paul Mullins†

Written by: Edward Albee

Scenic Design: Lee Savage**

Costume Design: Andrea Hood**

Lighting Design: Reza Behjat**

Sound Design: Fabian Obispo**

Fight Director: Adriano Gatto

Assistant Director: Scout Davis

Production Team

Stage Manager: Jenny Kennedy*

Assistant Stage Manager: Casey C. Powers

Sound Supervisor: John Kolbinski

Audio Engineer/Board Operator: Kevin Champion

Sound Asst./Board Operator: Lily Oyen

Lighting Supervisor: Jack Sears

Associate Lighting Supervisor: Noemi Barrera

Lighting Tech/Programmer/Board Op: Sadie Judd

Props Supervisor: Hyla Sue Stelhorn

Assistant Props Supervisor: Becky Barse-Nye

Props Artisan: Mer Platt

Costume Shop Supervisor: Cece Hill

Wardrobe Supervisor: Marcy LB Fitzpatrick

Asst. Costume Shop Supervisor/Draper: Cole Wilkowski

Costume/Wardrobe Assistant: Sophie Millar

Run Crew: Amelia Kovach

Technical Director: David Stelhorn

Shop Supervisor: Jackson Boever

Carpenters: Becky Barse-Nye, Calan Britz, Dylan Janish

Scenic Artists: Megan Lancy, Leah Brahmer

Scenic Fellow: Donnie Woodard

Lighting Fellow: Adrienne Miikelle

Sound Fellow: Theresa Ramos

Costume Fellow: Sean David Castro

*The noted Actors & Stage managers are members of the Actors' Equity Association, the union of professional actors and stage managers in the United States.

Actors' Equity Association ("Equity"), founded in 1913, is the U.S. labor union that represents more than 51,000 professional Actors and Stage Managers. Equity fosters the art of live theatre as an essential component of society and advances the careers of its members by negotiating wages, improving working conditions and providing a wide range of benefits, including health and pension plans. Actors' Equity is a member of the [AFL-CIO](#) and is affiliated with [FIA](#), an international organization of performing arts unions. #EquityWorks

**The noted designers are represented by United Scenic Artists, Local USA-829, IATSE.

†The noted directors are represented by the Stage Directors and Choreographers Society.

Leadership & Staff

Leadership & Staff

Artistic Director: Andrew Borba

General Manager: Emily Glinick

Arts Marketing Specialist: Makayla Santiago-Froebel

Director of New Work: Olga Sanchez Saltveit

Artistic Assistant: Rachel Sharp

Company Manager: Matthew B. Cullen

Assistant House Manager / Community Engagement Associate /
Assistant Company Manager: Daniel Wilde

Co-COVID Safety Specialists: Matthew B. Cullen, Daniel Wilde

Production & Facilities Manager: Holly Ahlborn

Assistant Production & Facilities Manager: Dylan Janish

House Manager: Sarah Brown-Millspaw

Arts Marketing Associate: Danny Sanchez

Cast Bios



Carol Halstead

Martha

Long Island, New York

CTC: Twelve Seasons

CTC Select Credits: *Into The Breeches*, *Noises Off*, *Our Town*, *You Can't Take It With You*, *Reckless*, *All My Sons*.

Broadway: *Gore Vidal's The Best Man*.

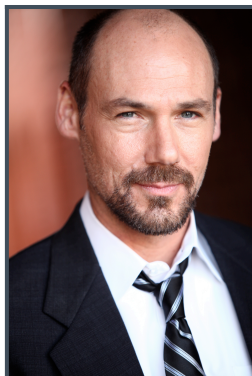
Off-Broadway & National Tour: *The Great Divorce* (FPA), *The Duchess of Malfi*, *Pericles* (Red Bull), *Walking Down Broadway* (The Mint), *Easter Candy*, *Urgent Fury* (Cherry Lane), *The Mask* (The Clurman).

Regional: *Pride and Prejudice*, *Hamlet* (Santa Cruz Shakespeare), *The Dolls House Part 2* (Jupiter Theatre); *Native Garden*, *Into The Breeches* (FL Rep); *Buried Child*, *Richard III*, *Diary of Anne Frank* (Shakespeare Theatre of NJ); *Titus Andronicus* (Clarence Brown); *Vanya, Sonia, Masha, and Spike* (Portland Center Stage, Orlando Shakespeare & White Heron), *Clybourne Park* (Barrington Stage), *A Song at Twilight* (Portland Stage Company); *Good People* (The Old Globe); *August: Osage County* (Fulton Theatre); *God of Carnage* (Hudson Stage); *The Clean House* (Syracuse Stage); *Private Lives* (The Kitchen Theatre). Other work at The Shakespeare Theatre DC, Baltimore's CENTERSTAGE, Denver Center Theatre Company, Cleveland Play House, Merrimack Rep, Kansas City Rep., Gulf Shore Playhouse, and San Jose Repertory Theatre.

Upcoming Film: *Books & Drinks*.

Television: *Madame Secretary*, *Elementary*, *Law & Order: Criminal Intent*, *Jonny Zero*, *As the World Turns*, *All My Children*.

BFA: Florida State University, MFA: ACT, San Francisco. Carol lives in New York City and trains as a Fourth degree black belt in Seido Karate. @carol_halstead



Andrew Borba

George

Tacoma, Washington | Los Angeles,
California

CTC: Eighteen Seasons

Andrew is in his 7th season as Artistic Director. He served 8 seasons as CTC's Associate Artistic Director and this is his 18th summer at Chautauqua Theater Company. Previously for CTC he directed *Commedia!*, *One Man, Two Guvnors*, *As You Like It*, *Noises Off*, *The Taming of the Shrew*, *After Love*, *The Comedy of Errors*, *The Philadelphia Story*, *Macbeth*, *Twelfth Night*, *Swimming Thru Abu Dhabi*, and *Carve* as well as the inter-arts collaborations in the Amp: *Mango Suite*, *Symphony of Sorrowful Songs*, *Ellis Island*, and *Go West!* As an actor at CTC, he has appeared in *Building the Wall*, *Our Town*, *Arcadia*, *Every Good Boy Deserves Favor*, *The Just*, *All My Sons*, *Frankenstein*, and *Dracula*. As an actor and director outside of CTC, Andrew has worked at theaters around the country, including South Coast Repertory, Pasadena Playhouse, The Globe Theatre, Berkeley Repertory, Oregon Shakespeare Festival (5 seasons), Shakespeare Festival of St. Louis, Dallas Theater Center, Portland Stage Company, The Long Wharf, Detroit Public Theater, PlayMakers Repertory, and others. On film, he has appeared in small parts in big films and big parts in small films and has had recurring and guest appearances on over 35 television series. Most recently Andrew can be sneered at as CEO/bad guy Phillip Corwin on the *Bosch: Legacy* TV series on Amazon. Andrew is a graduate of Brown University and New York University. He lives in Los Angeles and is Head of Acting and a Professor of Drama at UC Irvine.



Madeline Seidman

Honey

Westport, Connecticut

CTC: Third Season

CTC: *The Christians*, *One Man, Two Guvnors*, *How the Light Gets In*, *Tomorrow Will be Sunday*.

Other Theatre: *Soldiergirls* (Rattlestick, New York Theatre Workshop), *Good Faith* (Yale Rep), *Kitchen of Truth*, *In Between Bitches*, #4, *Lenny's* (Yale Cabaret); *Twelfth Night*, *Romeo & Juliet*, *Love I Awethu*

Further, Fun Home, Pivot (Yale Drama).

TV: *A League of Their Own* (Amazon). Recipient of Herschel Williams Award from Yale School of Drama, where she recently earned her MFA in acting. BA Williams College.



Adam Shaukat

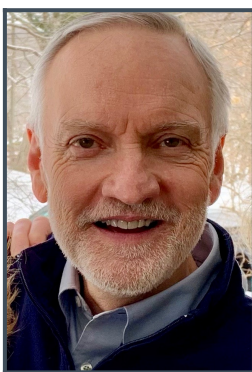
Nick

Croton-on-Hudson, New York

CTC: First Season

*Twelfth Night, Blood Wedding/Bodas de Sangre, YELL: A Documentary of My Time Here, Almost Nearly F*cking Finally, Swimmers, Luna Gale, Tilted* (Yale School of Drama). *Red Speedo, We Are Proud To Present*, (Yale Cabaret). MFA Yale School of Drama. Instagram: @adamshaukat

Creative Team Bios



Paul Mullins

Director

New York, New York

CTC: Fourth Season

CTC: *Our Town, You Can't Take It With You, The Art of Coarse Acting.*

Regional: Artistic Associate with Santa Cruz Shakespeare; Artistic Associate with The Shakespeare Theatre of New Jersey; The Old Globe; The Studio Theatre, Portland Stage Company; Dorset Theatre Festival; Connecticut Repertory Theatre; Jewel Theatre Company.



Lee Savage

Scenic Designer

Brooklyn, New York

CTC: Eleven Seasons

CTC: *One Man Two Guvnors, An Octoroon, The Profane, Henry V, Our Town, The Tempest, A Raisin in the Sun, The Romeo and Juliet Project, Cat on a Hot Tin Roof, As You Like It, Fifty Ways, Love's Labour's Lost, Amadeus, You Can't Take It With You, The Glass Menagerie, Arcadia, A Midsummer Night's Dream, Death of a Salesman and The Just.*

Broadway: *The Lightning Thief.*

Off-Broadway and NYC: Women's Project, Second Stage Uptown, Keen Company, Acting Company, Mabou Mines, Labyrinth, Primary Stages, LCT3, Roundabout Underground, Page 73, Atlantic, NAATCO, Clubbed Thumb, EST, and NY Fringe.

Regional: ACT, Asolo Rep, Baltimore Centerstage, Cleveland Play House, Dallas Theater Center, Glimmerglass, Goodman, Guthrie, Huntington, KC Rep, Long Wharf, Old Globe, Shakespeare Theatre Company, Signature, Philadelphia Theatre Company, PlayMakers,

Trinity Rep, Two River Theater, Washington National Opera, Wilma, Yale Rep, and others.

Awards: Helen Hayes, NAACP and Connecticut Critics Circle.
Affiliations: Wingspace and USA829. Education: MFA (Yale School of Drama), BFA (RISD), Head of Scenic Design at Rutgers, Mason Gross.



Andrea Hood

Costume Designer

Hobbs, New Mexico

CTC: Third Season

CTC: *Our Town*.

Broadway: *Into the Woods*.

Select Off-Broadway: *Hercules* (Shakespeare in the Park/Disney Theatrical); *As You Like It*, *Twelfth Night* (Shakespeare in the Park); *Romeo and Juliet* (The Public); *Love & Information* (NYTW);

Select Regional: The WHO's TOMMY (Kennedy Center); OBIE award for design, Lortel nomination. BFA in costume design from Texas State University.



Reza Behjat

Lighting Designer

Urmia, Iran

CTC: Two Seasons

Off-Broadway: *Wish You Were Here* (Playwrights Horizons), *The Vagrant Trilogy* (Public Theater), *English* (Atlantic Theater), *Out of Time* (Public/NAATCO), *P.S* (Ars Nova), *Disclaimer* (Public), *Henry VI* (NAATCO), *Hamlet* (Waterwell).

Regional: Guthrie Theater, Actors Theater of Louisville, Arizona Theatre Company, Hudson Valley Shakespeare Festival, PlayMakers Rep, Baltimore Center Stage, Geva Theatre, Alabama Shakespeare, Long Wharf Theater.

Awards and Nominations: Winner of Knight of Illumination Award for Nina Simone: *Four Women* (2019), Drama Desk Award nomination for *English* (2022). www.rezabehjat.com



Fabian Obispo

Sound Designer

New York, New York

CTC: First Season

Off-Broadway: *The Chinese Lady* (MaYi/The Public); *Out of Time* (The National Asian American Theatre Company/The Public); *Sea Wall/A Life* (The Public), *Teenage Dick* (MaYi/The Public); Manhattan Theatre Club, Manhattan Class Company, Atlantic Theatre Company, Vineyard Theatre, New Group, Classic Stage Company, Primary Stages, New York Theatre Workshop, Theater For A New Audience, The Acting Company and the Women's Project.

Regional: *Seven Guitars* (Arena Stage); *Bina's Six Apples* (Alliance Theatre/Children's Theatre Company); *Tiger Style* (South Coast Repertory); *Skin of our Teeth* (Playmakers Repertory Company); *Becoming Dr. Ruth* (Cincinnati Playhouse); Kennedy Center, Shakespeare Theatre Company, Folger Theatre, Cincinnati Playhouse, Goodman Theatre, Guthrie Theater, American Conservatory Theatre, Oregon Shakespeare Festival, Seattle Repertory Theatre, Laguna Playhouse, Cleveland Playhouse, Huntington Theatre, Syracuse Stage, Hartford Stage, Long Wharf Theatre, Westport Country Playhouse, TheatreWorks, Indiana Repertory Theatre, St. Louis Repertory Theatre, Pittsburgh's City Theatre Company, George Street Playhouse, Delaware Theatre Company, Asolo Repertory Theatre, and Alabama Shakespeare Festival, among others.

Film: (Original Score) *Sophocles in Staten Island*, *Vancouver*, *Abo*.

TV: (Original Score) *20 Years of Asian American Playwriting* (PBS Documentary)

Awards: (Sound) Barrymore Awards; Berkshire Theatre Critics Awards. (Original Score) International Motion Picture Awards; LA Film Festival's Indie Short Fest Awards, South Film and Arts Academy Festival Awards.



Adriano Gatto

Fight Director

Buffalo, New York

CTC: Three Seasons

Adriano returns thrilled to be back at CTC this season! CTC: *One Man, Two Guvnors, Into the Breeches!* Regional: the world premieres of *Revival: The Resurrection of Son House and Heartland*, as well as *The Niceties, To Kill a Mockingbird, Last Gas, The Diary of Anne Frank*, and *Wait Until Dark* (Geva Theatre Center); *Waiting for Godot, The Onion Game* (Irish Classical Theatre Company); *Berserker* (Alleyway Theatre); *Amadeus, The Bourgeois Gentleman* (Buffalo Philharmonic Orchestra); *Don Giovanni, Out of Darkness/Into the Fire*, and *The Marriage of Figaro* (Eastman Opera Theatre). As an internationally Certified Fight Director and Instructor with Fight Directors Canada, he has taught stage combat for various institutions, including the AFDC National Certification Conference (Calgary, AB), Eastman School of Music, SUNY Buffalo State, and Niagara University, where he serves as the Artist in Residence. Heartfelt gratitude to the entire team and family here at CTC. Huge love to my H2RO!



Scout Davis

Assistant Director

Los Angeles, California

CTC: First Season

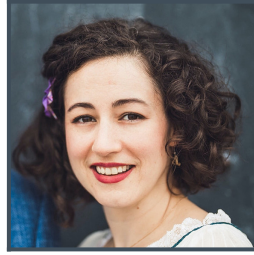
International: *FEVER DREAM: A RETURN PERFORMANCE RITUAL* (SIBIU International Theatre Festival)

Off-Broadway: *Many Loves* (Atlantic Stage II). Regional: *Extra-Ultra* (City Theatre-Hamburg Studio).

Off-Off-Broadway: *Next Faggot Nation* (HERE Arts Center), *Ivan's Widow* (Duo Multicultural Arts Center), *Ay Dias Chiqui* (St. Ann's Church), *Slaychella* (LaGuardia Performing Arts Center), *The Rise and Fall of Countess LuAnn DeLesseps* (The Clemente Center).

Artistic Associate with Playhouse Creatures Theatre Company. Directing Fellow at Westport Country Playhouse. Artist in Residence with Fresh Ground Pepper. Graduate of The John Wells MFA Directing

Fellowship Program at Carnegie Mellon University.



Jenny Kennedy

Stage Manager

Brooklyn, New York

CTC: Fifteen Seasons

CTC: *One Man Two Guvnors*, *Into the Breeches!*, *An Octoroon*, *Romeo & Juliet*, *Noises Off*, *The Taming of the Shrew*, *In The Next Room (or The Vibrator Play)*, *Henry V*, *Our Town*, *Go West!*, *The Comedy of Errors*, *Dark Radio*, *Everything Is Ours*, *Love's Labour's Lost*, *Carve, Elijah*, *Three Sisters*, *Macbeth*, *You Can't Take It With You*, *The Winter's Tale*, *Rx*, *Arcadia*, *A Midsummer Night's Dream*, *Sick, Reckless*, *Much Ado About Nothing*, *The Just*, *Vaidehi*, and *Ah, Wilderness!*

CTC Virtual: *The Voices Project* & *Tomorrow Will Be Sunday*.

Broadway: *The King and I*, *Bloody Bloody Andrew Jackson*, *Red*.

Off-Broadway: *Heroes of the Fourth Turning*, *The Thanksgiving Play* (Playwrights Horizons); *In The Body of the World* (MTC); *Office Hour* (The Public); *A Minister's Wife*, *When I Come To Die* (Lincoln Center Theater); *We Are The Tigers* (Theatre 80); *The Great Filter* (The Wild Project); *Anna Karenina: a riff* (Notch Theatre); *The Wedge Horse* (Fault Line Theatre).

Regional: *Trans Scripts*, *In The Body Of The World* (American Repertory Theater); *The Lion In Winter* (Two River Theater); *Squirrel Screams & Other Dating Sounds* (Madison Theatre at Molloy). Artistic Associate with Fault Line Theatre.



Casey Powers

Assistant Stage Manager

Bayonne, New Jersey

CTC: First Season

Regional: *A Midsummer Night's Dream* (Hudson Valley Shakespeare Festival), *The Mysterious Affair at Styles* (Red Monkey Theater Company with Bartow-Pell Mansion Museum). New York premiere of Mae West's *The Drag* at Fordham University. BA in Stage Management, Fordham University.

Friends of Chautauqua Theater

Friends of the Theater

Founded in 1994, Friends of Chautauqua Theater is dedicated to ensuring that theater remains a powerful pillar of the arts community at Chautauqua by working to enhance appreciation and engagement with the theater and the institution. Your membership supports new theater initiatives and helps us to enhance the experience of our company members through various event connections. Benefits include invitations to members-only live and virtual programming to enhance your theater experience prior to performances, and our annual “Meet the Company” event. [Visit our website to learn more!](#)