



**Department of  
Environmental  
Conservation**

**Julie M. Barrett O'Neill,  
Region 9 DEC  
June 2023  
Chautauqua Institution**



# Quick Review of DEC Region 9

- 6 Counties = 3 million acres of land (plus the Great Lakes)
- The Allegany, Genesee, and Niagara Rivers flow through Region 9.
- Over 75 miles of Lake Erie and 30 miles of Lake Ontario shoreline
- 26 Boat Launch and Fishing Access sites 170 miles of Public Fishing Rights
- 100,000 acres of State Forest, Multiple Use Area, Unique Area and Day Use
- Over 97,000 acres of State Reforestation areas
- Over 14,000 acres of Wildlife Management Areas
- Approximately 120 miles of Recreational Trails
- The only hazardous waste disposal facility in the North East
- West Valley Demonstration Project
- 7 major solid waste landfills, including 3 of the 5 largest in NYS
- 393 State Superfund sites
- Over 100 "Brownfield" sites



# Variety of DEC work

- Water, Wetlands, Shoreline and Flood Management
- Emergency Response & Spills
- Climate, Greenhouse Gas Emissions & Air Protection
- Petroleum & Chemical Storage
- Brownfields, Remediation
- Solid Waste Management
- Permits, Enforcement & Legal
- Office of Environmental Justice & Office of Indian Nation Affairs
- Recreation & Education
  - Reinstein
  - Camp Rushford
- Natural Resources
  - Forests
  - Wetlands
  - Fish
  - Wildlife
- Operations
  - Orchard Park
  - Little Valley
  - Flood Control



Department of  
Environmental  
Conservation





Amazing People

# DEC & Chautauqua Lake

1. Drinking Water Source Protection
2. Water Quality Sampling (RIBS & C-SLAP)
3. Harmful Algal Bloom (HAB) Response
4. Mayville PFAS Response
5. Nutrient Management – Total Maximum Daily Load Plan (TMDL)
6. Sanitary Sewer Permitting & Financing
7. Stormwater Management
8. Nonpoint Source Pollution Prevention
9. Septic management funding & planning
10. CAFO Management
11. Floodplain Management
12. Dam Management
13. Wetland Regulation
14. Shoreline & tributary management permitting
15. Fisheries Management Planning
16. Fish Habitat
17. Fish Hatchery
18. Freshwater Mussel Protection
19. Chautauqua Lake Wildlife Management Area
20. Aquatic Pesticide Application
21. Law Enforcement & Rangers
22. Boat Launches
23. Brownfield Clean Up



Department of  
Environmental  
Conservation





## 2.0: Breaking Down Silos & Watershed Based Approach

- Focus on solving problems
- Interdisciplinary, watershed focused internal DEC team
- Dedicated regional DEC leadership & Chautauqua basin staff
- Active involvement of statewide DEC topic experts
- New Chautauqua Lake DEC communications tools

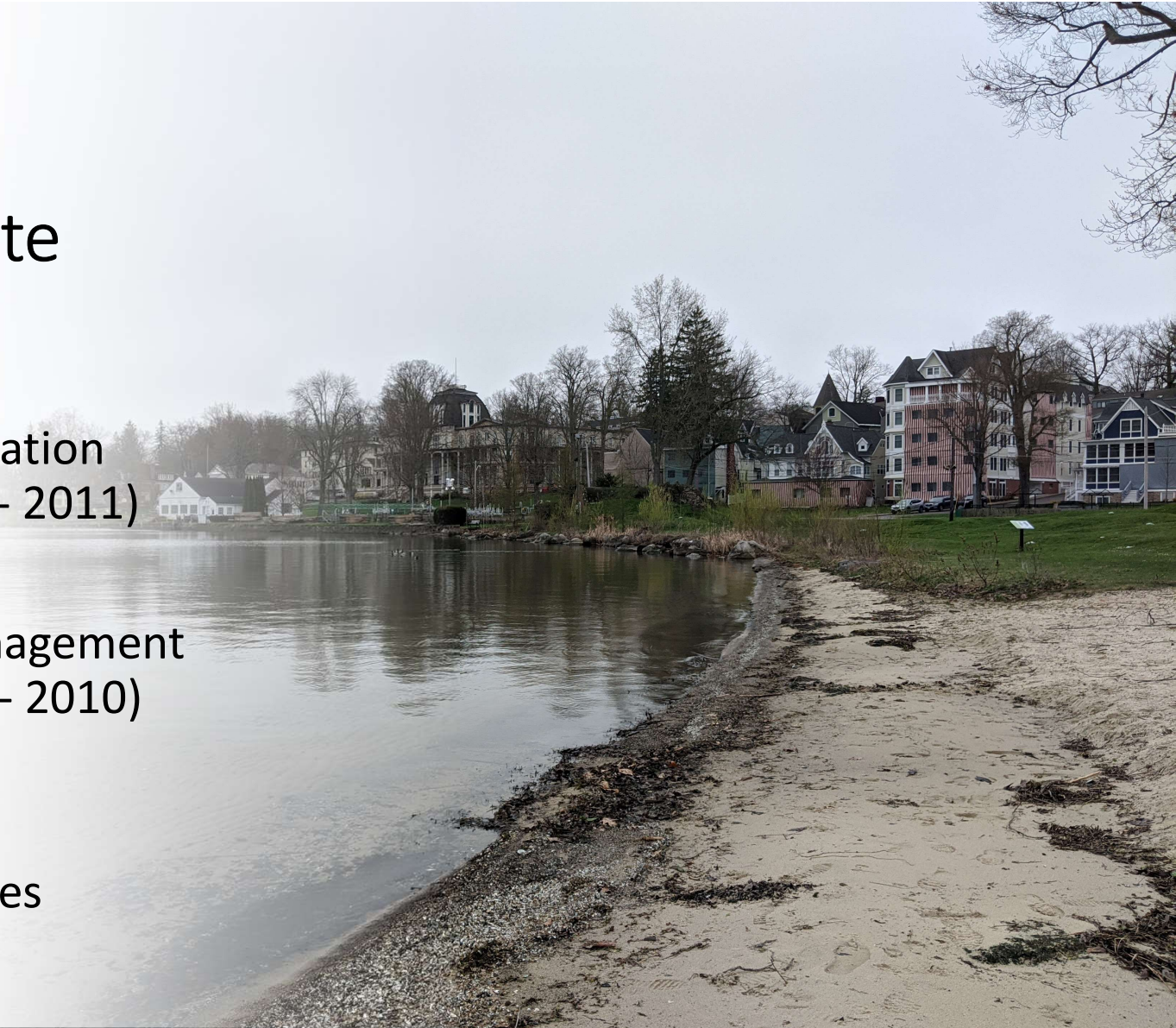
# Watershed Management Programs

- Chesapeake Bay Watershed Program
- Great Lakes Watershed Program
  - Lake Erie LaMP
  - Lake Ontario LaMP
  - Area of Concerns
  - IWAPs
- Hudson River Estuary River Program
- Lake Champlain Basin Program
- Long Island Sound (LIS)
- Long Island South Shore Estuary
- Mohawk River Watershed Program
- New York City Watershed Program
- New York/New Jersey Harbor
- Onondaga Lake Watershed Program
- Peconic Estuary



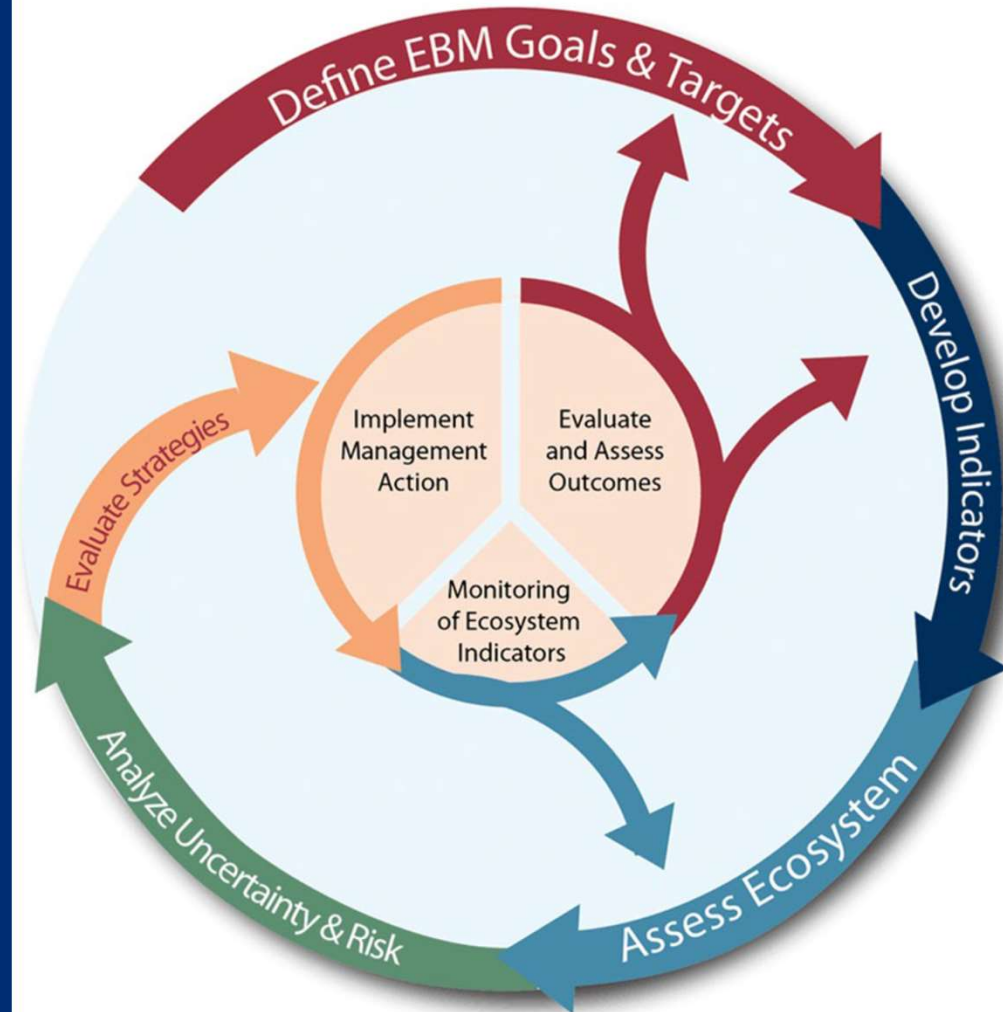
# In addition, NY Department of State

- Local Waterfront Revitalization Program (Chautauqua Lake - 2011)
- Watershed Resource Management Planning (Chautauqua Lake - 2010)
- Smart Growth & Climate Resilience Planning Resources



# It works!

- Buffalo River Area of Concern: Remedial Action Plan & Committee
- Lake Erie Fisheries – Consensus Based Management Plan
- Local Waterfront Revitalization &
- Brownfield Opportunity Area Plans











Heritage Press





# Next Steps

- Continue listening & learning
- Transparent, regular communications & build trust!
- Coordinate water quality monitoring efforts
- Learn more about sediment conditions, contamination & nutrient loads – fill in gaps as needed to take action!
- Update the Lake's nutrient & sediment management budget (TMDL)
- Understand what, if any, impacts of the 2022 wetland law
- Understand how climate change will impact the lake & identify opportunities to increase resilience

- Update ecosystem, fish & wildlife health goals
- Understand how people use the Lake – particularly water dependent (marinas) & water enhanced uses
- Define
  - what success looks like – be specific!
  - the steps to get there – be specific!
  - Who is responsible for each piece
- Update Watershed Management Plan (DOS)
- Update the Local Waterfront Revitalization Plan (DOS)
- Review for Consistency, Implement & Monitor !!!!







# Thank You

Julie M. Barrett O'Neill

Reginal Director

[julie.barrett-oneill@dec.ny.gov](mailto:julie.barrett-oneill@dec.ny.gov)

716-851-7204

**Connect with us:**

Facebook: [www.facebook.com/NYSDEC](http://www.facebook.com/NYSDEC)

Twitter: [twitter.com/NYSDEC](http://twitter.com/NYSDEC)

Flickr: [www.flickr.com/photos/nysdec](http://www.flickr.com/photos/nysdec)