

## Execution of Justice

Written and Directed by Emily  
Mann

### Program

Performance Dates: July 12 - 25

It's 1978, and San Francisco is a divided city. The brutal murders of Mayor George Moscone and Supervisor Harvey Milk — the nation's first openly gay elected official — shocked a nation. This gripping documentary play examines the trial of Dan White, the disgruntled former city supervisor whose reduced voluntary manslaughter conviction, rather than murder in the first degree, sparked outrage and introduced the infamous "Twinkie defense." Ripped from the headlines, personal interviews, and court documents of the past but still resonating powerfully today, this play confronts themes of justice, prejudice, and privilege and grapples with the issues of gun violence and systemic homophobia. This contemporary classic challenges us to reflect on our identity as a nation.

### Content Advisory

*This production contains strong language, disturbing imagery, and intense courtroom drama surrounding real-life events.*

*Recommended for audiences ages 13 and older.*

### Strobe Lighting Advisory

*Please be advised that this performance contains strobe lighting effects. These effects may not be suitable for individuals with photosensitive epilepsy or other light sensitivities.*

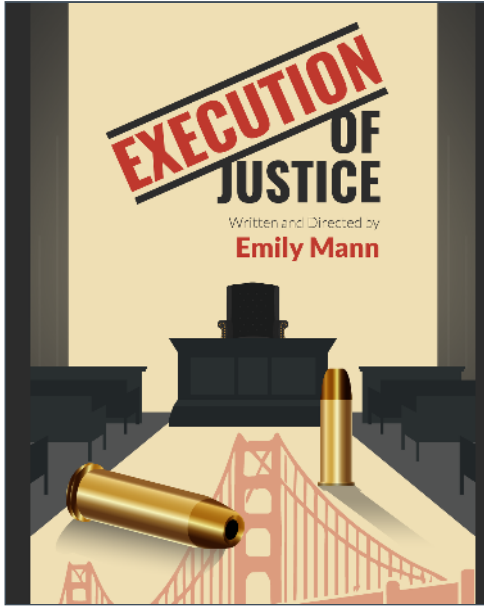
*Viewer discretion is advised.*

### Acting Company



Julien Alam

Milk's Friend/Rudy Nothenberg/Carl Carlson/Juror #2



## Execution of Justice

Written and Directed by Emily Mann

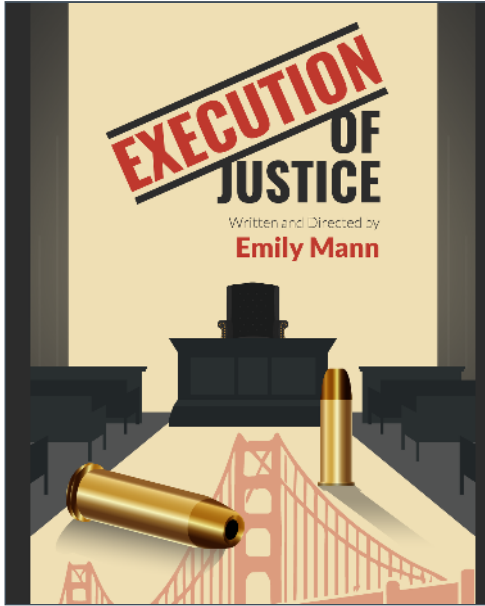
**CTC:** first season. **Regional:** *The Last Five Years* (Princeton Summer Theater); *Collateral: The Collaterusical* (Brooklyn Comedy Collective). **International:** *13th Morning* (Edinburgh Fringe Festival); *Julius Caesar* (Intercollegiate Shakespeare Co.); *Antony and Cleopatra* (LAMDA). **Education:** B.A. Princeton; MFA NYU Grad Acting.



## Zach Appelman\*

Dan White

**CTC:** *Death of a Salesman*, *Arcadia*, *The Winter's Tale*, and *A Midsummer Night's Dream*. **Broadway:** *War Horse*. **Off-Broadway:** *A Midsummer Night's Dream* (TFANA); *Troilus & Cressida* (The Public Theater); *The Beacon* (Irish Repertory Theatre). **Regional:** *Henry V* (The Folger Theater); *Hamlet* (Hartford Stage); *Arms & The Man* (The Old Globe); *Romeo & Juliet* (Chicago Shakespeare Theatre); *The Engagement Party* (Hartford Stage). **TV:** "Sleepy Hollow," "Homeland," "The Marvelous Mrs. Maisel," "Special Ops: Lioness," "The Good Fight," "The Resident," "Chicago PD," "Bull," "Blue Bloods," "New Amsterdam," "Law & Order: SVU," "FBI," "God Friended Me," "The Passage," and "Beauty & The Beast." **Film:** "Like Father" and "Kill Your Darlings." **Audiobooks:** *All the Light We Cannot See*, *Hamlet* and *Julius Caesar* (The Folger Library). **Awards:** CT Critics Circle Award (*Hamlet*, *The Engagement Party*); Audie Award & Earphones Award (*All the Light We Cannot See*). **Education:** BFA UC Santa Barbara; MFA Yale School of Drama...



## Execution of Justice

Written and Directed by Emily Mann



Anina Baker

---

Joanna Lu/Young Mother/Dolson

**CTC:** first season. **Regional:** *Much Ado About Nothing* (Marin Shakespeare Company); *Eurydice* (The Actors Space). **Film:** “Bunny Laces” **Education:** B.A. UC Berkeley; MFA UC Irvine.

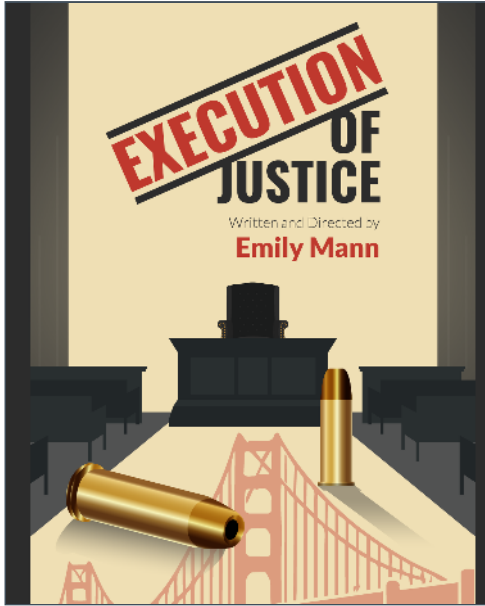


David Bertoldi

---

Doug Schmidt

**CTC:** first season. **Regional:** *La Broa'*, *The Inheritance u/s* (Trinity Rep); *Ironbound*, *Fugitive Songs*, *One Flea Spare* (Brown/Trinity Rep); *Henry VI Part 2*, *King Lear*, *The Waverly Gallery*, *Sense & Sensibility*, *Love's Labor's Lost*, *A Midsummer Night's Dream* (Shakespeare & Company); *Pterodactyls*, *The Tempest* (Ghostlight Rep); *REALLY* (WAM Theatre). **Education:** MFA Brown/Trinity Rep; B.A. Clark University.



## Execution of Justice

Written and Directed by Emily Mann



Ayla Marie Decaire

Mary Ann White

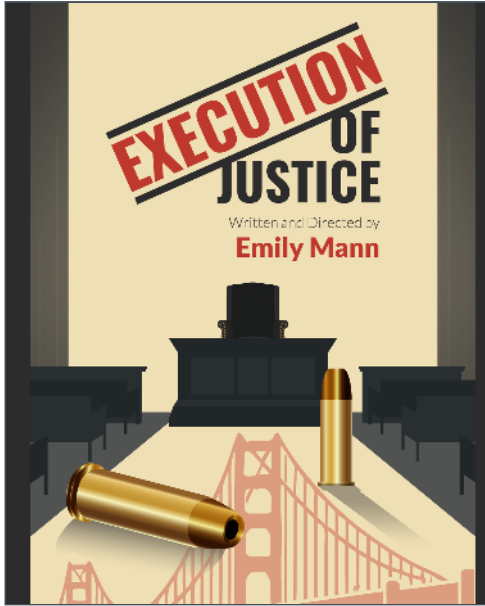
**CTC:** first season. **Regional/Educational:** *Big Love*, *Three Sisters*, *Connection Is Unstable*, *The Munchies*, *Taming of the Shrew*, *The Revolutionists*. **Film:** “Super Powers Aren't a Thing,” “Alone in the Darkness,” “More Than Capable,” “Is This Nora?” **Education:** MFA Acting Columbia University (2026), B.A. California State University Long Beach.



Germainne Lebrón

Joseph Frietas/Moscone's Friend/Edward Erdelatz/Dr. Levy

**CTC:** first season. **Regional:** *Derecho* (La Jolla Playhouse); *La Gringa* (American Stage); *Native Gardens* (The Warehouse Theatre); *The Inheritance* (Trinity Rep); *Dracula*, *Madre Tierra*, *A Christmas Carol* (Actors Theatre of Louisville); *Are You There?* (Humana Festival of New American Plays); *Julius Caesar* (Stages on the Sound); *Eight Tales of Pedro* (The Secret Theatre); *Deadman's Cellphone* (Red Monkey Theatre Group); **Educational:** *Hedda Gabler*, *The Rogues Trial*, *Motherloss* (Wagner New Play Festival 25); *The Promise* by Jose Rivera, *Romeo & Juliet*, *809 Almond* (Wagner New play Festival 2024) **Education:** MFA Actor University of California, San Diego.



## Execution of Justice

Written and Directed by Emily Mann



Bailey Lee

---

Cyr Copertini/Denise Apcar/Carol Ruth Silver/Court Clerk/Officer Sullivan/Young Mother

**CTC:** first season. **Off-Broadway:** *No Singing in the Navy* (Playwrights Horizons New Works Lab). **Regional:** *Lesson for the Future, Prairie* (Lincoln Center Education); *Pirates of Penzance, Romeo and Juliet* (North Carolina Symphony); *Here There Be Dragons* (Players Theater); *Papa* (New Hazlett Theater); *Sweeney Todd* (Arts One Presents); *Human Democracy* (American Democracy Project). Co-Founder of the artistic collective The What Co. **Education:** BFA University of North Carolina School of the Arts, MFA candidate University of California, San Diego.

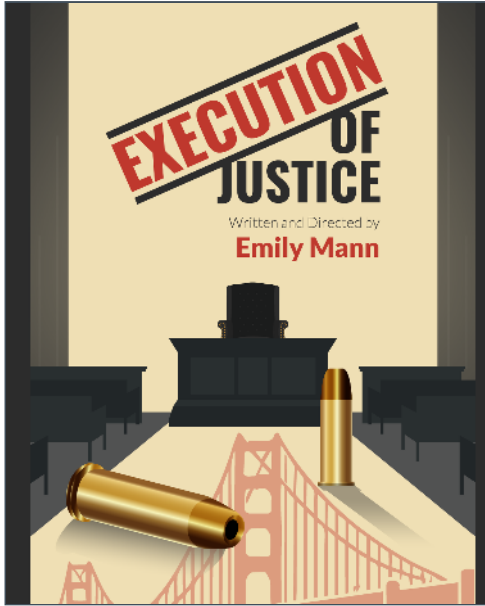


Olamide Oladeji

---

Gwenn Craig/Coroner Stephens/Barbara Taylor/Dr. Solomon/Juror #1

**CTC:** first season. **Regional:** *The Inspector* (Yale Rep). **Educational:** *'You Can Tell a Tree by Its Fruit'* (David Geffen School of Drama at Yale); *Cherry Orchard, Chicken & Biscuits, Bite Me* (Theatre UCF). **Education:** MFA David Geffen School of Drama at Yale University.



## Execution of Justice

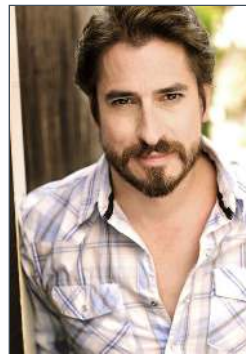
Written and Directed by Emily Mann



## Christopher Thomas Pow

### The Court

**CTC:** first season. **Regional:** *Grandmother / Bathtub, Beneath Soil* (Yale Cabaret); *Lucy & Charlie's Honeymoon* (Lookingglass Theatre); *Tiger Style!* (Writer's Theatre); *Cambodian Rock Band* (Theatre Mu/Jungle Theatre, Victory Gardens Theatre/City Theatre/Merrimack Repertory Theatre); *Great Expectations, The Tempest, Love's Labours Lost* (Great River Shakespeare Festival); *Short Shakes! Macbeth* (Chicago Shakespeare Theatre). **Education:** B.A. Northwestern University; MFA candidate, David Geffen School of Drama at Yale (2027).

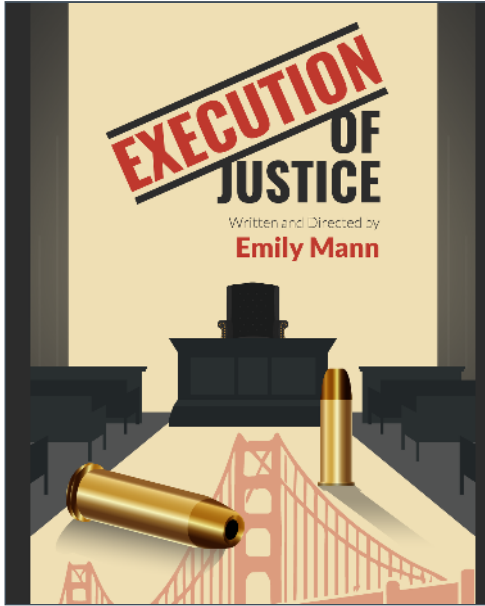


## Matthew Saldívar\*

### Frank Falzon/Cop/William Melia/Juror #3

**CTC:** *Build, The Light and the Dark*. **Broadway:** *Junk, Act One* (Lincoln Center Theater), *Peter and the Starcatcher, A Streetcar Named Desire, Saint Joan, Bernhardt/Hamlet, Honeymoon in Vegas, The Wedding Singer, Grease*. **Regional:** *Much Ado About Nothing* (Shakespeare Theater Company); *Guys and Dolls, Spamalot* (The Kennedy Center); productions for Hartford Stage, Bay Street Theater, Mark Taper Forum, Long Wharf, Williamstown, Pittsburgh Civic Light Opera, and six productions for The Guthrie Theater among others. **Off-Broadway:** *The Merchant of Venice* (TFANA/The Royal Lyceum Theater, Edinburgh, Scotland); *Hadestown, Architecture of*





## Execution of Justice

Written and Directed by Emily Mann

*Loss* (NY Theater Workshop); *Hamlet, Massacre* (The Public); and productions at MTC, Classic Stage Company, Women's Project, TFANA, NY Shakespeare Festival, 2nd Stage, Atlantic, Blue Light, New World Stages, Primary Stages, NY City Center, Signature Theater among others. **Tour:** Luther Billis in LCT's *South Pacific*. **TV:** "Dying for Sex," "The Other Two," "Live from Lincoln Center," "Rent: Live on Fox," "The Code," "The Good Cop," and "Elementary" among others. **Education:** M.A./B.A. Middlebury College, MFA NYU.



Amarih SoVann

---

Sister Boom Boom/Jim Denman/Officer Byrne/Richard Pabich/Frediani

**CTC:** first season. **Educational:** *King Hedley II* (NYU); *Jitney, Everybody* (KSU Stillwell Theatre). **International:** *13th Morning* (Caveat and Edinburgh Festival Fringe). **Awards:** August Wilson Monologue Competition State Finalist (2019). **Education:** MFA NYU Acting.

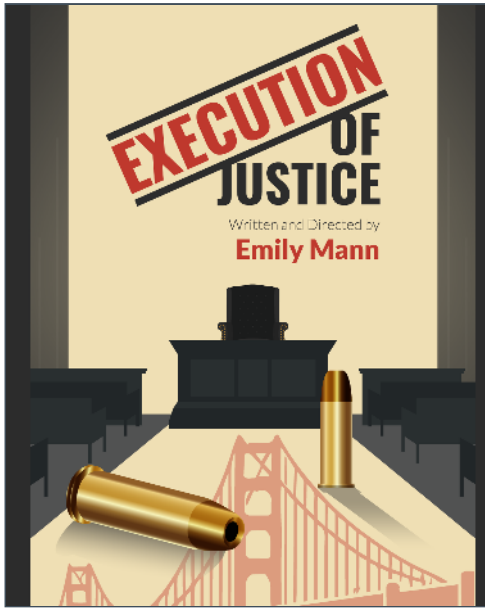


Frank Wood\*

---

Tom Norman

**CTC:** first season. **Broadway:** *Side Man, Great Society, Network, Iceman Cometh, Clybourne Park, August: Osage County, Born Yesterday, Hollywood Arms*. **Off-Broadway:** *Hold on to Me Darling*



## Execution of Justice

Written and Directed by Emily Mann

(The Lucille Lortel Theatre), *The Meeting: The Interpreter* (St. Clement's), *Toros* (Second Stage), *The Best We Could* (MTC), and numerous productions at Signature Theatre, Vineyard Theatre, Lincoln Center, Atlantic Theatre, and Playwrights Horizons. **Film:** "She Said," "Joker," "St. Vincent," "Changeling," "Dan in Real Life," "Thirteen Days," "In America," "Down to You," "Royal Tenenbaums." **TV (select credits):** "Billions," "Blacklist," "The Night Of," "Mozart in the Jungle," "Newsroom," "Girls," "Sopranos," "Flight of the Conchords" and "Law & Order: SVU" (recurring). **Regional:** McCarter Theatre, ACT, Long Wharf, Goodman Theatre, Arena Stage. **Nominations:** Drama Desk (*Hold on to Me Darling*); Lucille Lortel Award (*Toros*). **Awards:** Tony Award, Drama League Award (Sideman). **Education:** B.A. Wesleyan; MFA, NYU Graduate Acting.

## Creative Team



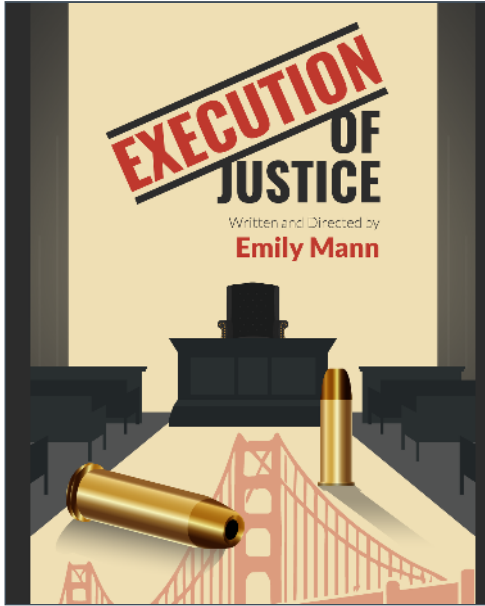
Emily Mann

### Playwright/Director

**Emily Mann** is a Tony-nominated director and playwright and a Tony Award-winning Artistic Director. In her 30 years as artistic director and resident playwright at McCarter Theatre Center in Princeton, New Jersey, she wrote 15 new plays and adaptations, directed over 50 productions, produced 180 plays and musicals, and supported and directed the work of emerging and legendary playwrights including Ntozake Shange, Athol Fugard, Edward Albee, Christopher Durang, Nilo Cruz, Joyce Carol Oates, Tarell Alvin McCraney and Danai Gurira and is known for her productions of Williams, Lorca, Chekhov, and Shakespeare.

On Broadway, she directed her own plays *Execution of Justice* and *Having Our Say*, Nilo Cruz's *Anna in the Tropics* and *A Streetcar Named Desire*. Her other plays include *Still Life*; *Annulla*, *An Autobiography*; *Greensboro (A Requiem)*; *Meshugah*; *Mrs. Packard*; *Gloria: A Life*, which aired on PBS' Great Performances, and *The Pianist, a play with music*. Her adaptations include *Baby Doll*, *Scenes from a Marriage*, *Uncle Vanya*, *The Cherry Orchard*, *A Seagull in the*





## Execution of Justice

Written and Directed by Emily Mann

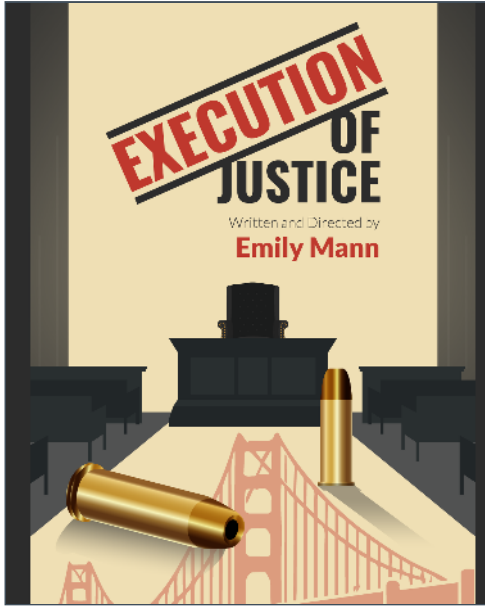
*Hamptons*, *The House of Bernarda Alba*, and *Antigone*. She recently premiered *On Cedar Street*, a new musical cowritten with Lucy Simon, Carmel Dean and Susan Birkenhead. Awards include Peabody, Guggenheim, Hull Warriner, NAACP, six OBIEs; Drama Desk, Outer Critics Circle, WGA nominations; Princeton University Honorary Doctorate of Arts; Helen Merrill Distinguished Playwrights' Award; Margo Jones Award; TCG Visionary Leadership Award; The Lilly Award and Gordon Davidson Awards both for Lifetime Achievement in the Theater. She recently received a Lifetime Achievement Award from The Dramatists Guild in Playwriting and is a proud member of The Dramatists Guild Council. She has been inducted into the American Academy of Arts and Sciences and the American Theater Hall of Fame. She has just completed writing a new play, *Code Red*, due for production in the coming year.



**Brittany Vasta**

Scenic Design

**CTC:** second season. *Birthday Candles*, *Fabulation*, and *The Light and The Dark*. **Broadway Associate:** *Uncle Vanya*, *The Lifespan of a Fact*, *Chicken & Biscuits*. **Off-Broadway:** *A Woman Among Women*, *Self Portraits* (Bushwick Starr); *racecar racecar racecar* (ART NY); *minor.ity* (WP Theatre); *Octet*, *Rinse Repeat* (Signature Theatre); *Harlequin & Pantalone* (NY City Center); *Life Sucks* (Theatre Row); *Happy Birthday Wanda June* (The Duke); *Lawnpeople* (Cherry Lane); *Vilna* (Theatre at St. Clement's); *Leap and the Net Will Appear* (The Flea); *Road to Damascus* (59E59); *Your Hair Looked Great* (Abrons Arts Center). **Regional:** *The Brothers Size*, *Redwood*, *Choir Boy*, *the ripple the wave that carried me home* (Portland Center Stage, OR); *Octet* (Berkeley Rep); *Lady Day at Emerson's Bar and Grill*, *Sense & Sensibility* (Syracuse Stage); *School Girls or the African Mean Girls Play*, *Sex with Strangers*, *Welcome to Fear City*, *Brother Toad* (KC Rep); *My Name is Asher Lev*, *The Whipping Man* (Portland Stage Company, ME); *August Osage County*, *From the Author of* (UDeI Rep); *Richard III*, *The Devil's Disciple* (Shakespeare Theatre of New Jersey); *Gypsy* (Theatre Aspen). **Nomination:** Drama Desk (*Octet*). **Education:** MFA, NYU. USA 829 member.



## Execution of Justice

Written and Directed by Emily Mann

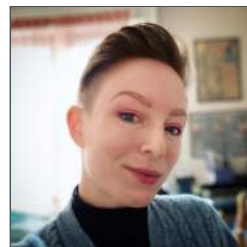


Jen Caprio

---

Co-Costume Designer

**CTC:** second season. *The Light and The Dark*. **Broadway:** *The Heart of Rock and Roll*, *Spamalot*, *Falsettos*, *The 25th Annual Putnam County Spelling Bee*. **National/International:** *Clue*, *Falsettos*, *Joseph...*, *The Lion* (West End/US tour), *...Spelling Bee* (U.S. tours). Over 250 Regional Theater and Opera productions over the last 25 years. **TV:** “The Pigeon Explains!” (YouTube); “Tiny Time Travel” (PBS Kids); “Sesame Street” (seasons 47–54); “The Not-Too-Late Show with Elmo” (seasons 1–2); “Manhunt” (Apple TV+). **Awards/Nominations:** Daytime Emmy Award (Sesame Street).

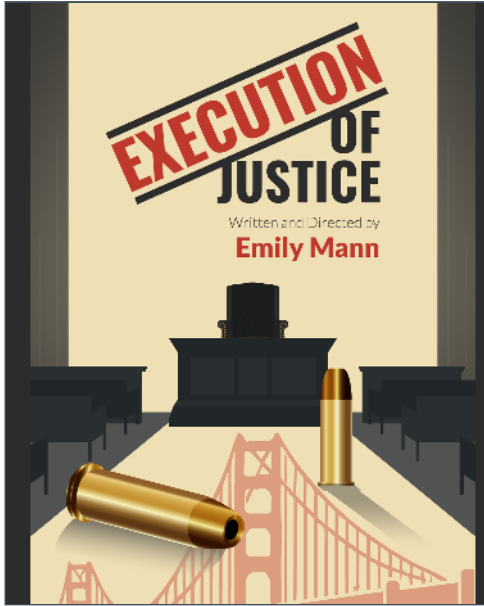


Michelle Ridley

---

Co-Costume Designer

**CTC:** first season. **Broadway (associate designer):** *The Last 5 Years*, *Maybe Happy Ending*, *The Heart of Rock and Roll*, *Kimberly Akimbo*, *The Rose Tattoo*, *The Band's Visit*, *Six Degrees of Separation*. **Off-Broadway:** *This is Like That* (Dream Up Fest); *Songs For a New World* (XL Cabaret). **Regional/International:** *Four Woke Baes* (Edinburgh Fringe); *Klub Rubiks*, *The Miss Behave Show*, *Around the World With The Diva*, *It's a Ship Show* (Virgin Voyages); *The Nina Variations* (Perth Fringe). **Film:** “Little Sparrows” (Dir. Camille Chen). **Education:** West Australian Academy of Performing Arts.



## Execution of Justice

Written and Directed by Emily Mann



Jeanette Oi-Suk Yew

Lighting Designer

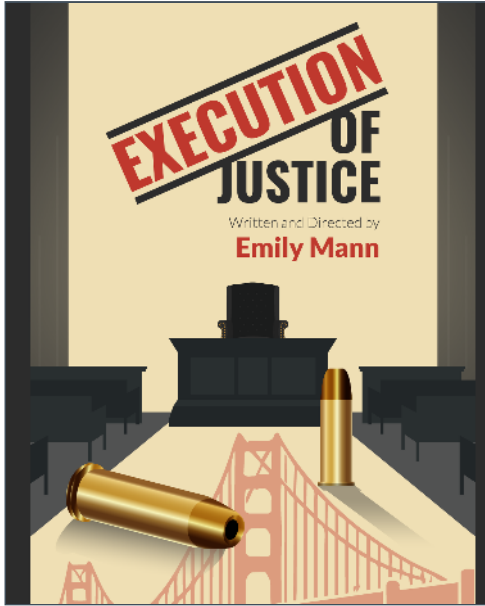
**CTC:** first season. **Broadway:** *Kimberly Akimbo*, *The Thanksgiving Play*. **Off-Broadway:** *The Connector* (MCC); *Manahatta*, *cullud wattah* (The Public), *Golden Shield* (MTC); *The Nosebleed* (LCT3); *Wine in the Wilderness* (CSC); *Gloria: A Life* (Daryl Roth Theatre). **Regional:** *A Wrinkle in Time* (Arena Stage), *King Lear* (Shakespeare Theatre Company), *The Odyssey* (A.R.T.), *Something Moving: A Meditation on Maynard* (Ford's Theatre). **Other:** *Macbeth in Stride* (BAM Harvey); *Oratorio for Living Things* (Ars Nova); *Madame Butterfly* (Boston Lyric Opera); *An American Soldier* (PAC); *The March* (Annie-B Parson and Big Dance Theater); David Byrne's immersive *Theater of the Mind* and Emursive's *Life & Trust*. **Awards:** OBIE for sustained achievement in design, Henry Hewes Lighting Design Award, LIT Design Award, NEA/TCG career development program recipient. Arts professor/head of Lighting Design with NYU Tisch Drama's Production & Design Studio.



Mark Bennett

Sound Designer & Original Composition

**CTC:** first season. **Broadway:** *The Coast of Utopia*, *Junk*, *Vanya and Sonia and Masha and Spike*, *A Streetcar Named Desire*, *Driving Miss Daisy*, *Who's Afraid of Virginia Woolf?*, *The Goat*, *Henry IV*, *A Steady Rain*, *A View From the Bridge*, and Lily Tomlin's *The Search...* **Off-Broadway:** *Ghosts*, *An Iliad*, *Mad Forest*, *L'Illusion*, *My Children*, *My Africa!*, *Dog eaters*. **Regional:** *The Pianist* (George



## Execution of Justice

Written and Directed by Emily Mann

Street Playhouse); *Turning Off the Morning News*, *Antony and Cleopatra*, *All the Days*, *Phaedra Backwards*, *Cat on a Hot Tin Roof* (McCarter Theatre Center). **Original Music:** *Eight* Joseph Papp Public Theater and Shakespeare-in-the-Park productions, and five Bridge Project productions (Sam Mendes, BAM/The Old Vic). **Awards:** Drama Desk Award-score & Henry Hughes Design Award-sound design (*The Coast of Utopia*); OBIE Award (*Ghosts*, *An Iliad*); incl. Sustained Excellence in Sound Design (2 OBIE Awards). **Nominations:** 14 Drama Desk Nominations, 3 Lucille Lortel Awards. **Other:** Associate arts professor/head of Sound Design with NYU Tisch Drama's Production & Design Studio.



John Narun

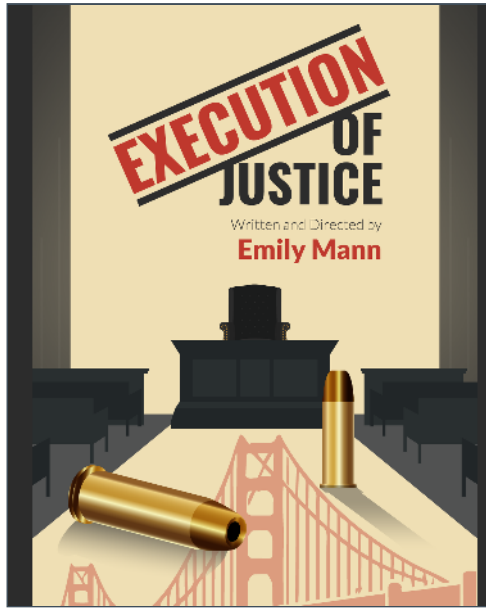
Projections Designer

**CTC:** first season. **Broadway:** *Torch Song Trilogy*. **Off-Broadway:** *The Seven Year Disappear* (The New Group); *The Tallest Tree in the Forest*, *The Laramie Project* (BAM); *What I Did Last Summer* (The Signature Theatre); *The Secret Life of Edward Gorey* (Sheen Center). **Regional:** *The Squirrels*, *Blueprints to Freedom*, *The Darrell Hammond Project* (La Jolla Playhouse); *Born for This* (Arena Stage). **Concerts:** Madonna, Ricky Martin, Christina Aguilera, Jennifer Lopez, Celine Dion, Britney Spears, The Spice Girls. **Nominations:** Primetime Emmy, Drama Desk, 3 Henry Hewes Design Award, 2 Craig Noel Awards, and an NYIT Award. **Other:** Adjunct professor of Projection Design, Rutgers University.



Cheryl Mintz\*

Production Stage Manager



## Execution of Justice

Written and Directed by Emily Mann

**CTC:** first season. **Broadway:** *Anna in the Tropics* (Pulitzer Prize winner & Tony nominated), *The Road To Mecca*, *Me and My Girl*, *Teddy & Alice*, *A Change in the Heir*, *Those Were the Days*. **McCarte Theatre Center:** 30 seasons, 25 as resident production stage manager, with 111 productions including 38 collaborations with Emily Mann including the world premieres of *Vanya and Sonia and Masha and Spike* (Tony Award for Best Play), *Me, Myself & I*, *The Figaro Plays*, *Murder on the Orient Express*, *The Brother/Sister Plays*, *Greensboro*, *Hoodwinked*, *Meshugah*, *Mrs. Packard* (McCarte/Kennedy Center). **Regional:** *The Pianist* (George Street Playhouse, World Premiere). **Opera/Dance:** 70+ productions including 13 collaborations with Maestro Gian Carlo Menotti and Spoleto Festival USA/Italy. New York City Opera at Lincoln Center: five seasons, 40+ operas and musicals, three tours, three PBS telecasts. Current production stage manager (47 ballets) for American Repertory Ballet and New Jersey Ballet; collaborations with Jerome Robbins, Ethan Stiefel, and Maria Kowroski. **Teaching:** Adjunct Professor in Theater, Montclair State University. **Other:** Co-Founder/Partner/Creative Director of Princeton VIRTUAL; 20-year member of the Stage Managers' Association Board; Producer, Del Hughes Awards. **Awards:** 2010 Applause Award, 2020 Award of Excellence (New Jersey Theatre Alliance Curtain Call). **Education:** MFA Yale School of Drama.

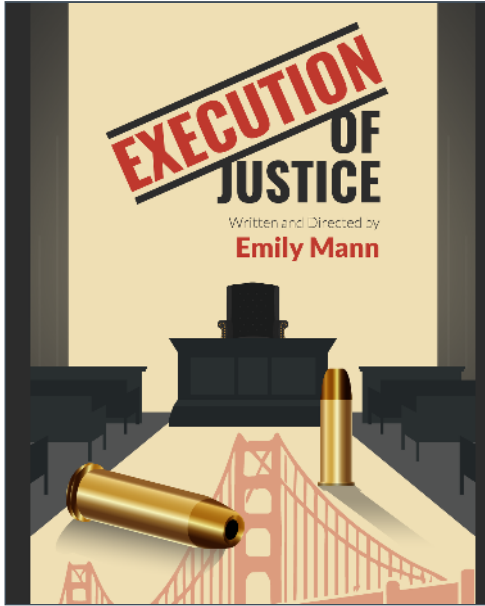


KeVaughn Harvey

Assistant Director

**CTC:** first season. **Regional:** *A Peace of Home* (New Circle Theater); *Ass Plays* (John Jay College CUNY); *The Company of Spiders* (Philly Artists' Collective); *Marie Antoinette* (UPenn); *Empire* (Brown/Trinity Rep). **Assistant/Associate:** *Primary Trust* (Roundabout); *Radio Golf* (Trinity Rep); *All God's Chillun' Got Wings* (Jack/Civic Ensemble). **Member:** LCT Directors Lab, Roundabout Directors Group, and Beth Morrison Projects Producer Academy. **Education:** B.A. Cornell University; MFA Brown University/Trinity Rep program Acting and Directing.





## Execution of Justice

Written and Directed by Emily Mann

## Ryan Marsh

---

Sound Associate

**CTC:** first season. **Off-Broadway:** *Upside downDown, Bettinger's Luggage, On The Right Track* (AMT Theater). **Regional:** *Sweet Charity* (Gulfshore Playhouse); *Waitress* (Moonlight Stage Productions). **Education:** MFA Design NYU Tisch; B.A. Theater University of California, Los Angeles.



## Karly Amato

---

Assistant Stage Manager

**Off-Broadway:** *Jelly's Last Jam* (New York City Center Encores!). **Regional:** *Primary Trust* (McCarter Theatre Center); *Antony & Cleopatra, A Midsummer Night's Dream* (Quintessence Theatre Group); *tick, tick... BOOM!* (Theatre Horizon); *Winnie the Pooh & Friends, The Comedy of Errors, The Complete Works of William Shakespeare* (abridged, Pennsylvania Shakespeare Festival). **Education:** BFA Theatre Design, Montclair State University.



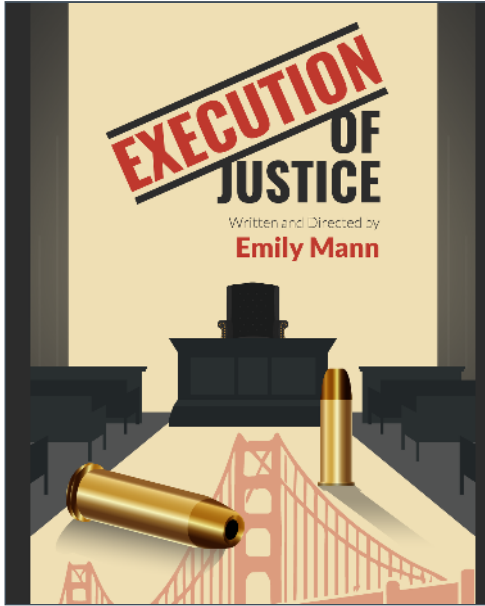
## Ashleigh Been

---

Production Assistant

**CTC:** first season. **Education:** BA Montclair State University Theater Studies.





## Execution of Justice

Written and Directed by Emily Mann



### Kathleen Stanton-Sharpless

Production Assistant

**CTC:** first season. **Regional:** *Importance of Being Ernest* (Encore Musical Theater); *Ruinous Gods* (Spoleto Festival). **Education:** BFA Design and Production, University of Michigan Class of (2026).

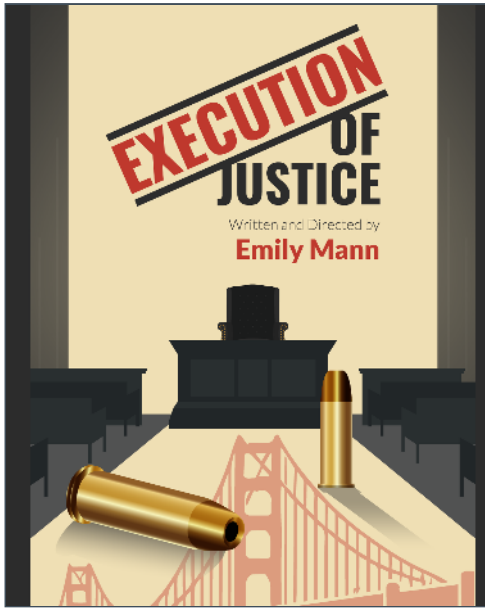
### Assistant Designers



### Sebastián Zavalza

Scenic Fellow

**CTC:** first season. **Regional:** *Cabaret*, *Matilda the Musical JR*, *The Knight at Dawn KIDS Musical* (Perry-Mansfield Performing Arts School and Camp). **International:** *Abide* (OISTAT Romania Myths & Algorithms International Gala); *Mean Girls the Musical* (Obertura Compañía); *Mexican Folkloric Ballet* (ITESM Queretaro). **Educational:** *Lear*, *John Proctor Is the Villain*, *Titanic* (Carnegie Mellon University); *You on the Moors Now*, *A Little Night Music* (assistantships, Carnegie Mellon University). **Other:** Interior Design credits include Grupo Ramón García (Spain & Mexico) developing brand identity through product display for luxury brands (Bimba Y Lola), and Amsterdam Furniture (Mexico). **Education:** MFA Carnegie Mellon University.



## Execution of Justice

Written and Directed by Emily Mann

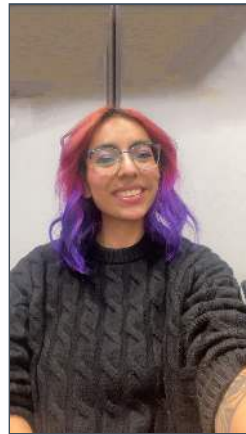


**Abby Garraty**

---

Costume Fellow

**CTC:** first season. **Educational:** *Marie Antoinette*, *Dance Nation*, and *Macbeth* (University of Iowa). **Education:** MFA University of Iowa.

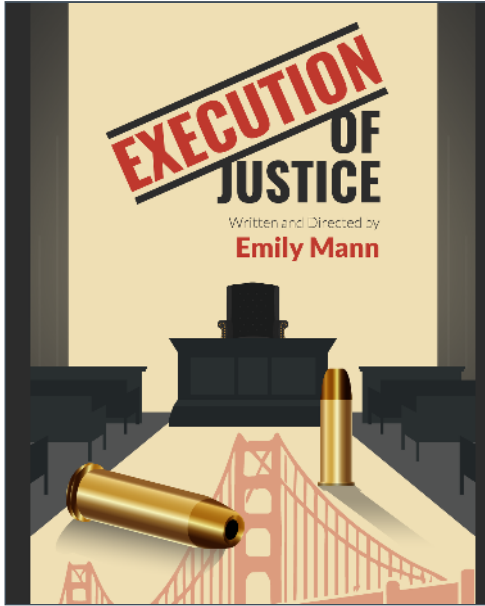


**Brittany Chato**

---

Lighting Fellow

**CTC:** first season. **Regional:** *Alice in Wonderland* (Wayne Ballet); *Got Jazz* (The Hiland Theatre); *Le comte Ory* (Opera Southwest); *A Mariachi Christmas* (Ballet Folklorico) **Educational:** *The Magic Flute* (UNM Opera Company); *The Grown-Ups* (Carnegie Mellon University). **Education:** MFA candidate Carnegie Mellon University.



## Execution of Justice

Written and Directed by Emily Mann



Pan-Pan Gou

Sound Fellow

**CTC:** first season. **Regional:** *El Coqui Espectacular* and *The Bottle of Doom* (Cleveland Public Theatre, Associate); *Anything Goes*, *Into the Woods*, *The Sound of Music*, *Once on This Island*, *Guys and Dolls*, *Natasha, Pierre & The Great Comet of 1812* (assistant, Pittsburgh Civic Light Opera). **Education:** B.A. University of California Irvine, MFA candidate Carnegie Mellon University.

### Note

*\*The noted Actors & Stage Manager are members of the Actors' Equity Association, the union of professional actors and stage managers in the United States.*

*Actors' Equity Association, founded in 1913, represents more than 49,000 actors and stage managers in the United States. Equity seeks to advance, promote, and foster the art of live theatre as an essential component of our society. Equity negotiates wages and working conditions, providing a wide range of benefits, including health and pension plans. AEA is a member of the AFL-CIO, and is affiliated with FIA, an international organization of performing arts unions. The Equity emblem is our mark of excellence. [www.actorsequity.org](http://www.actorsequity.org).*

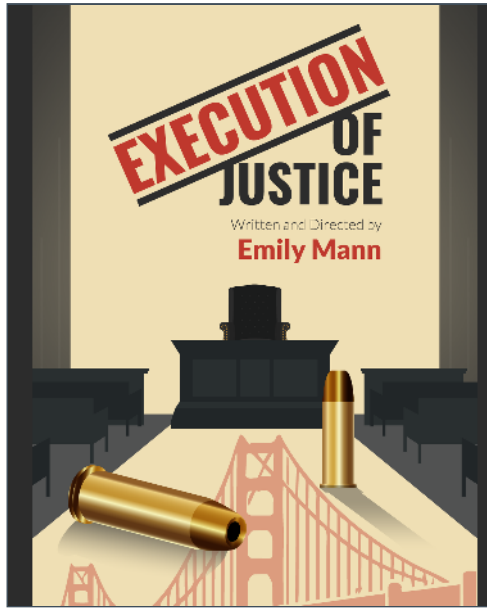
*Director is a member of Society of Directors and Choreographers (SDC).*

## Chautauqua Theater Company

### LEADERSHIP

**Producing Artistic Director:** Jade King Carroll

**Managing Director:** Emily Glinick



## Execution of Justice

Written and Directed by Emily  
Mann

**Arts Marketing Specialist:** Holly Weston

### ARTS ADMINISTRATION

**New Works Associate:** Lily Wolff

**Company Manager:** Sarah Vardigans

**Assistant Company Managers:** Rachael Ellis, Rachel Halili

**General Management Assistant:** Cece Hill

**Artistic Assistant:** Jennifer Davis

**Social Media Assistant:** Grace McCabe

**House Manager:** Ashley Austin

**Assistant House Manager & Sales Assistant:** Meenakshi Chinmai

**Graphic Designer:** Chance Brinkman-Sull

### STAGE MANAGEMENT

**Preseason Production Stage Manager:** Jenny Kennedy

**Equity Stage Managers:** Jean E. Compton, Cheryl Mintz, Jenn Rae Moore, Bernita Robinson

**Assistant Stage Managers:** Karly Amato, Savanha Moore

**Stage Management PAs:** Ashleigh Been, Katherine Stanton-Sharpless

### PRODUCTION

**Production Manager:** Jeff Taylor

**Assistant Production Manager:** Kaitlyn Meegan

**Carpenter & Facilities Assistant:** Solomon Buckley

**Production Management PA:** Savannah Venegas

**Run Crew:** Carolyn Ruby

**Prop Supervisor:** Hyla Sue Stellhorn

**Assistant Prop Supervisor:** Donnie Woodard

**Prop Artisans:** Jharrel Bernado, Noah Butcher

**Costume Supervisor:** Erin Prokopchak

**Assistant Costume Supervisor & Draper:** Sean D. Castro

**First Hand:** Helen Ryser

**Costume Assistant:** Atlas Mendoza

**Wardrobe Lead:** Sophie Millar

**Lighting Supervisor:** Matt DiVita

**Assistant Lighting Supervisor:** Jackie Baumert Renaud

**Lighting Technician & Board Operator:** Brittany Konruff

**Sound Supervisor:** John Kolbinski

**Assistant Sound Supervisor:** Larkin Ethridge

**Audio Engineer:** Jay Korter

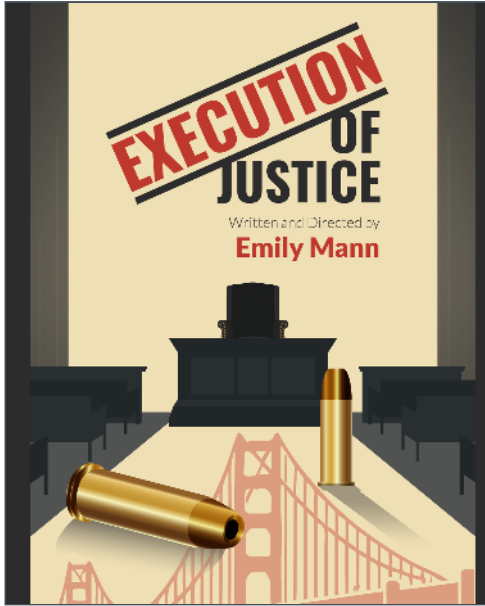
### CITY THEATER - SCENIC BUILD TEAM

**Technical Director:** Sam Karas

**Carpenter:** Jacob Jencks

**Scenic Change:** Ash Burford, Lea Pick

**Summer Carpenters:** Charlie Lovett, Ben Sexton



## Execution of Justice

Written and Directed by Emily  
Mann

### Donors

Penny Bank

The Arnold and Jill Bellowe Fund for Theater

The Jill W. Bellowe Chautauqua Conservatory Theater Scholarship

The Frances Black Scholarship Fund

The Nancy E. Brewer Fund for Theater

The Charles and Ethel Brody Theater Scholarship

The Andrew L. Gayle Shaw Camden Fund for Theater Arts

Chautauqua Theater Fund

The Chautauqua Theater Scholarship

Bill and Chloe Cornell Theater Scholarship

Court Family Endowment

The Crockett Family Fund for Theater

Eroll and Elaine Davis

The Edith B. and Arthur E. Earley Fund for the Performing Arts

The Agnes H. and Hal A. Fausnaugh Fund for Theater Programming

The Agnes H. and Hal A. Fausnaugh Chautauqua Conservatory  
Theater Scholarship

Roe Green

Terrie Vaile Hauck Theater Endowment

The Joel and Barbara Jacob and M. Jacob and Sons Fund for Theater

Bruce W. and Sarah Hagen McWilliams

The William E. Miller, Jr. Theater Scholarship

Helen Moe Fund for Theater

The S. Joseph Nassif Family

New York State Council on the Arts

The Florence and Cynthia Norton Fund for Theater

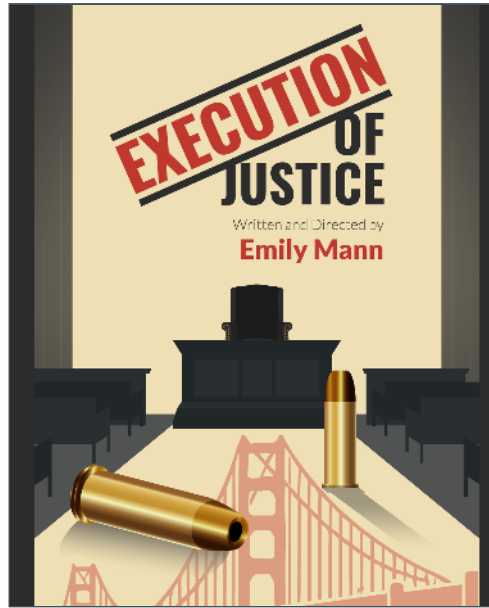
The Phoebe Wagner Ott Theater Fund

The Rittman Family Fund for Performing Arts

Irene and David Tabish Endowment for Theater

Caroline Van Kirk Bissell

The Mark W. Williams Scholarship



## Execution of Justice

---

Written and Directed by Emily  
Mann